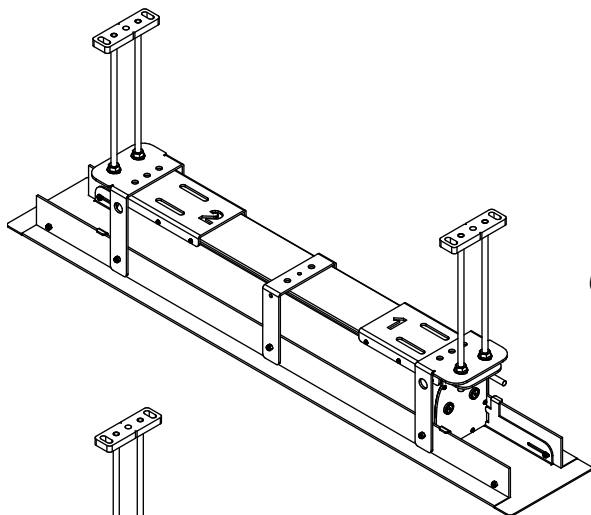
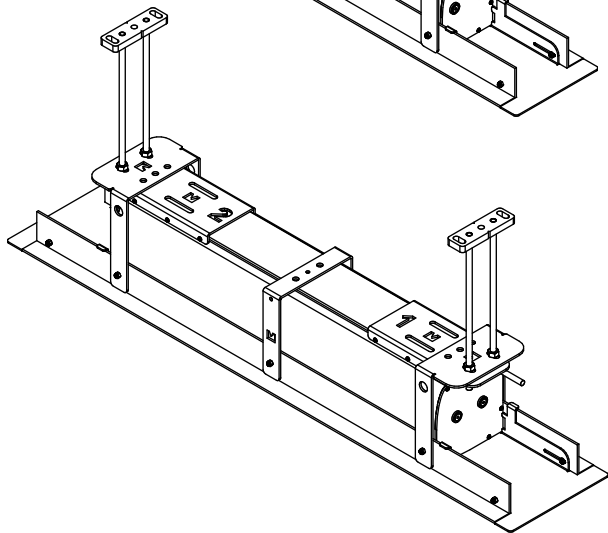


INSTRUCTION MANUAL

FALSE CEILING TRIM KIT (FCK)



COMPACT



MAJOR

ORIGINAL INSTRUCTIONS IN ITALIAN LANGUAGE

Translation into English language

INDEX

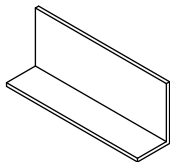
COMPONENTS INSIDE THE PACKAGING - FCK COMPACT	page.	4
COMPONENTS INSIDE THE PACKAGING - FCK MAJOR	page.	5
DIMENSIONS - FCK COMPACT	page.	6
DIMENSIONS - FCK MAJOR	page.	7
ASSEMBLING - FCK COMPACT / MAJOR	page.	8
MOUNTING TO THE CEILING - FCK COMPACT / MAJOR	page.	9
MOUNTING THE SCREEN ONTO THE FCK	page.	11

COMPONENTS INSIDE THE PACKAGING

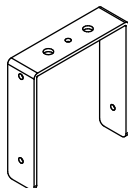
FCK COMPACT

When you open the packaging, please CHECK that it contains ALL the components below.
In case, one or more components are missing, please refer to the dealer you purchased the product from.

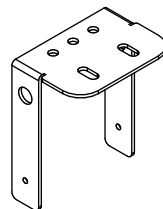
A Pcs. 02
White long "L" form profiles
pre-punched



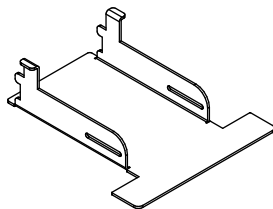
B Pcs. 01
White "C" form support



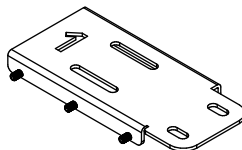
C Pcs. 02
White structural "C" form
supports



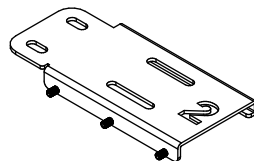
D Pcs. 02
White side doors



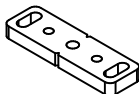
E Pcs. 01
White mounting plate "1"
screen housing



F Pcs. 01
White mounting plate "2"
screen housing



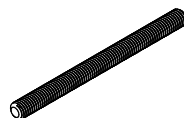
G Pcs. 02
Ceiling mounting plates



H Pcs. 12
Nuts M8



I Pcs. 04
Threaded rods M8x1000mm.



J Pcs. 04
Flanged nuts M8



K Pcs. 08
Flat washers $\varnothing 25 \times 2$ M8



L Pcs. 04
Button head screws
M4x12mm.



M Pcs. 06
Countersunk flat head
screws M4x10mm



N Pcs. 10
Self-blocking nuts M4

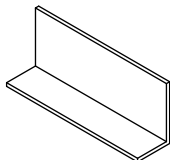


COMPONENTS INSIDE THE PACKAGING

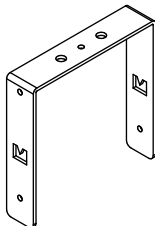
FCK MAJOR

When you open the packaging, please CHECK that it contains ALL the components below.
In case one or more components are missing, please refer to the dealer you purchased the product from.

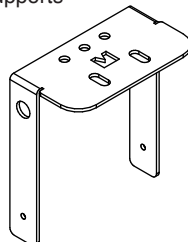
A Pcs. 02
White long "L" form profiles
pre-punched



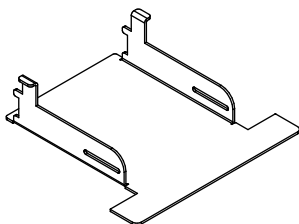
B Pcs. 01
White "C" form support



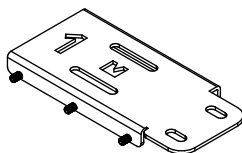
C Pcs. 02
White structural "C" form
supports



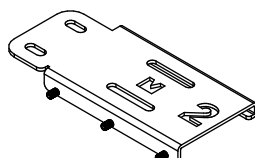
D Pcs. 02
White side doors



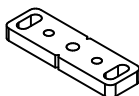
E Pcs. 01
White mounting plate "1"
screen housing



F Pcs. 01
White mounting plate "2"
screen housing



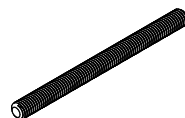
G Pcs. 02
Ceiling mounting plates



H Pcs. 12
Nuts M8



I Pcs. 04
Threaded rods M8x1000mm



J Pcs. 08
Flanged nut M8



K Pcs. 04
Flat washer ø25x2 M8



L Pcs. 04
Button head screw
M4x12



M Pcs. 06
Countersunk flat head screws
M4x10mm.

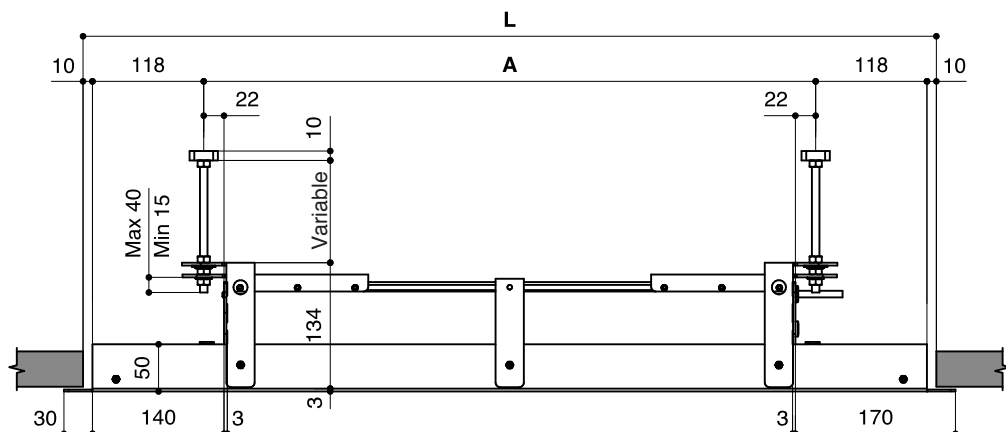


N Pcs. 10
Self-blocking nuts M4

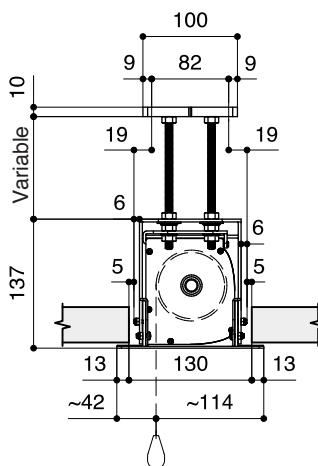


DIMENSIONS - FCK COMPACT

FRONT VIEW FCK COMPACT



SIDE VIEW FCK COMPACT



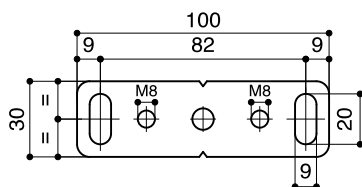
FIXING POINTS DIMENSIONS OF CEILING MOUNTING PLATE

	A (mm)	B (mm)
COMPACT PROFESSIONAL (Without borders)	Width of Viewing Area + 115	82
COMPACT HOME CINEMA (With side borders of 50 mm)	Width of Viewing Area + 215	82
COMPACT TENSIONED	Width of Viewing Area + 405	82

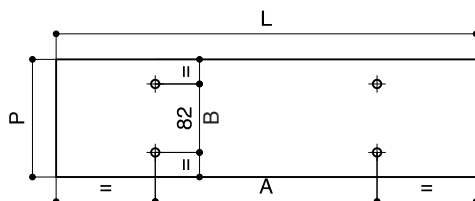
DIMENSIONS HOLE IN FALSE CEILING

	L (mm)	P (mm)
COMPACT PROFESSIONAL (Without borders)	Width of Viewing Area + 370	130
COMPACT HOME CINEMA (With side borders of 50 mm)	Width of Viewing Area + 470	130
COMPACT TENSIONED	Width of Viewing Area + 660	130

TOP VIEW CEILING MOUNTING PLATE

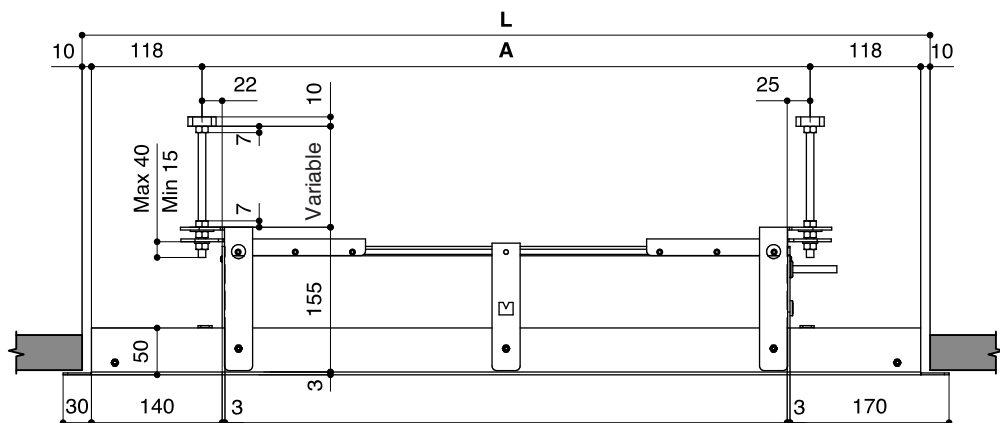


HOLE IN FALSE CEILING AND FIXING POINTS CEILING

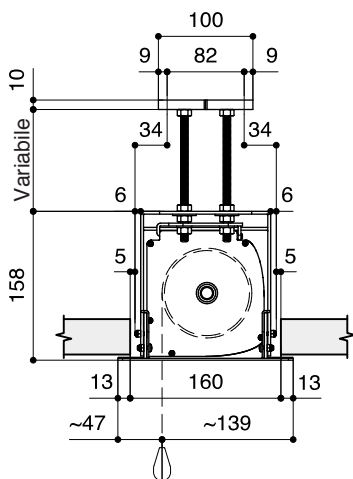


DIMENSIONS - FCK MAJOR

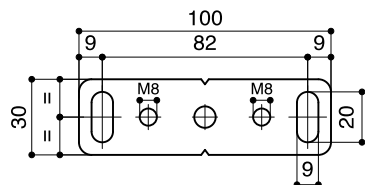
FRONT VIEW FCK MAJOR



SIDE VIEW FCK MAJOR



TOP VIEW CEILING MOUNTING PLATE



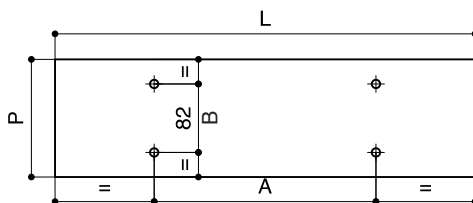
FIXING POINTS DIMENSIONS OF CEILING MOUNTING PLATE

	A (mm)	B (mm)
MAJOR PROFESSIONAL <i>(Without borders)</i>	Width of Viewing Area + 130	82
MAJOR HOME CINEMA <i>(With side borders of 50 mm)</i>	Width of Viewing Area + 230	82
MAJOR TENSIONED	Width of Viewing Area + 422	82

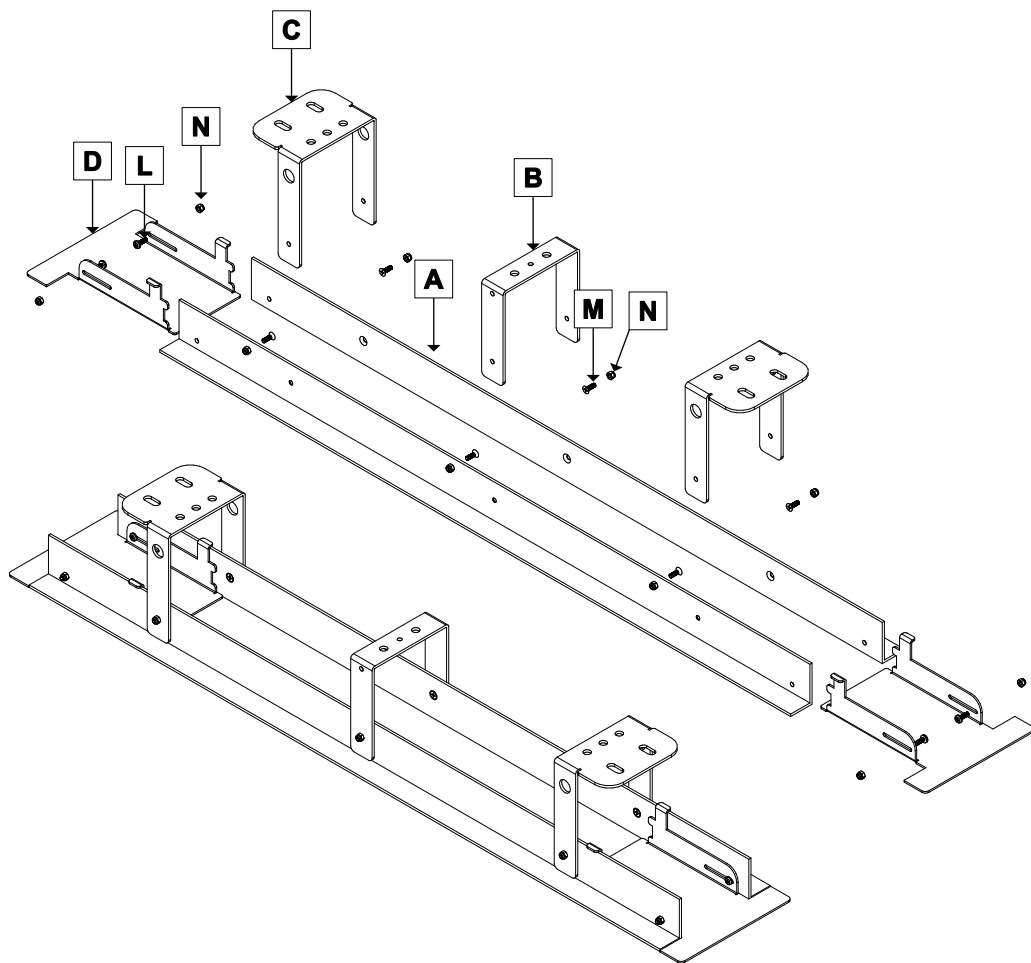
DIMENSIONS HOLE IN FALSE CEILING

	L (mm)	P (mm)
MAJOR PROFESSIONAL <i>(Without borders)</i>	Width of Viewing Area + 385	160
MAJOR HOME CINEMA <i>(With side borders of 50 mm)</i>	Width of Viewing Area + 485	160
MAJOR TENSIONED	Width of Viewing Area + 677	160

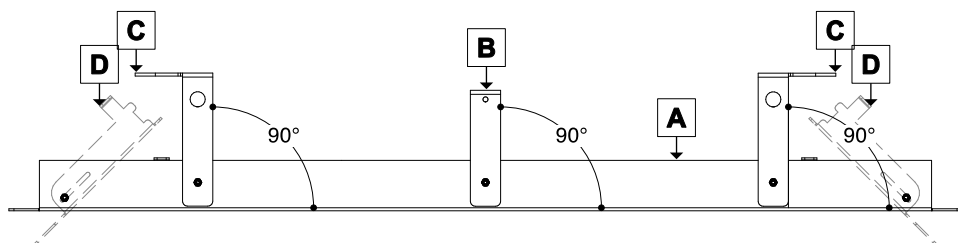
HOLE IN FALSE CEILING AND FIXING POINTS CEILING



ASSEMBLING - FCK COMPACT / MAJOR



- Check that the parts **B** and **C** are exactly perpendicular to part **A**.
- Take care to fix part **L** with **N** so that **D** can be rotated.



MOUNTING TO THE CEILING - FCK COMPACT / MAJOR



Hole to be drilled in the upper ceiling

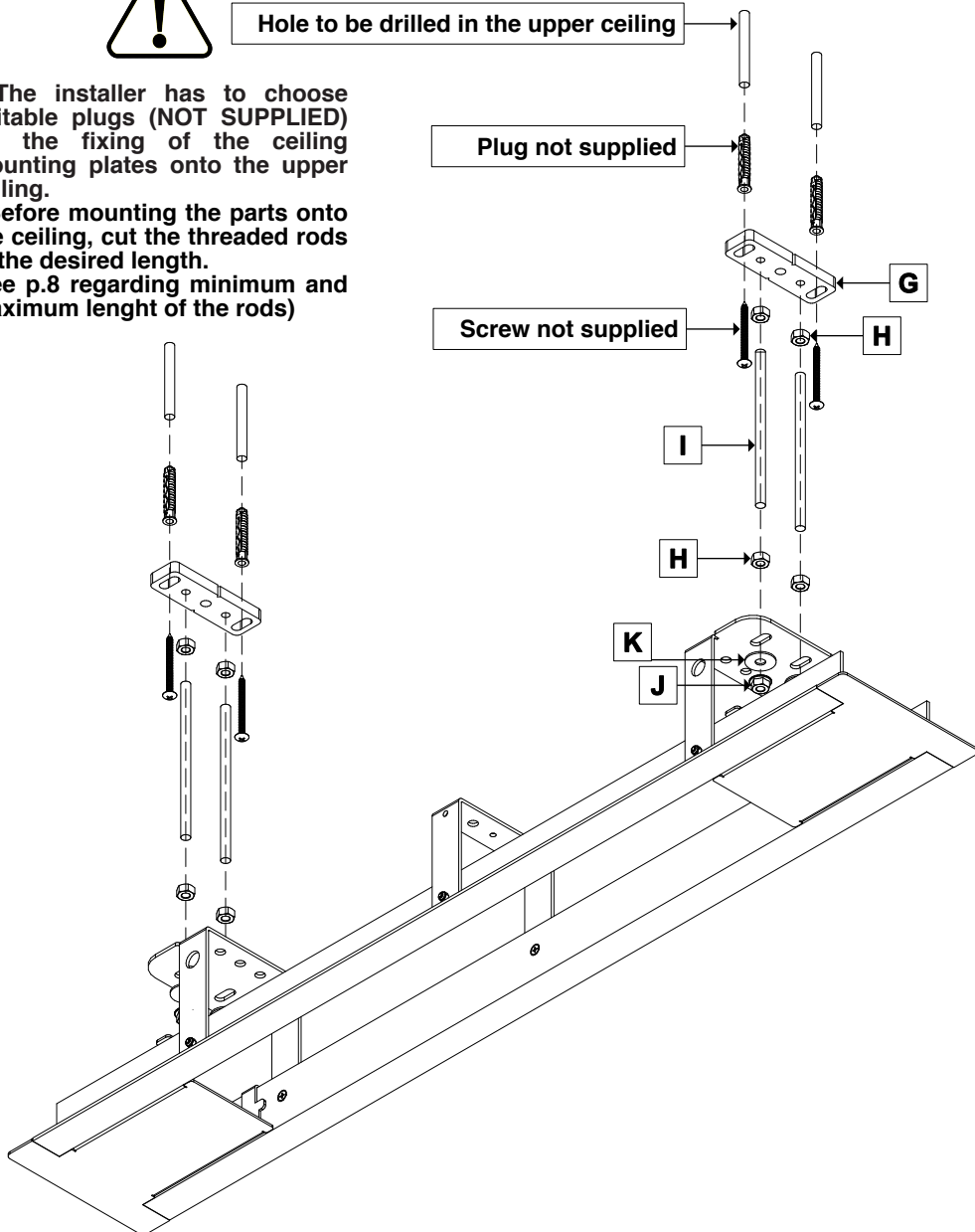
- The installer has to choose suitable plugs (NOT SUPPLIED) for the fixing of the ceiling mounting plates onto the upper ceiling.

- Before mounting the parts onto the ceiling, cut the threaded rods to the desired length.

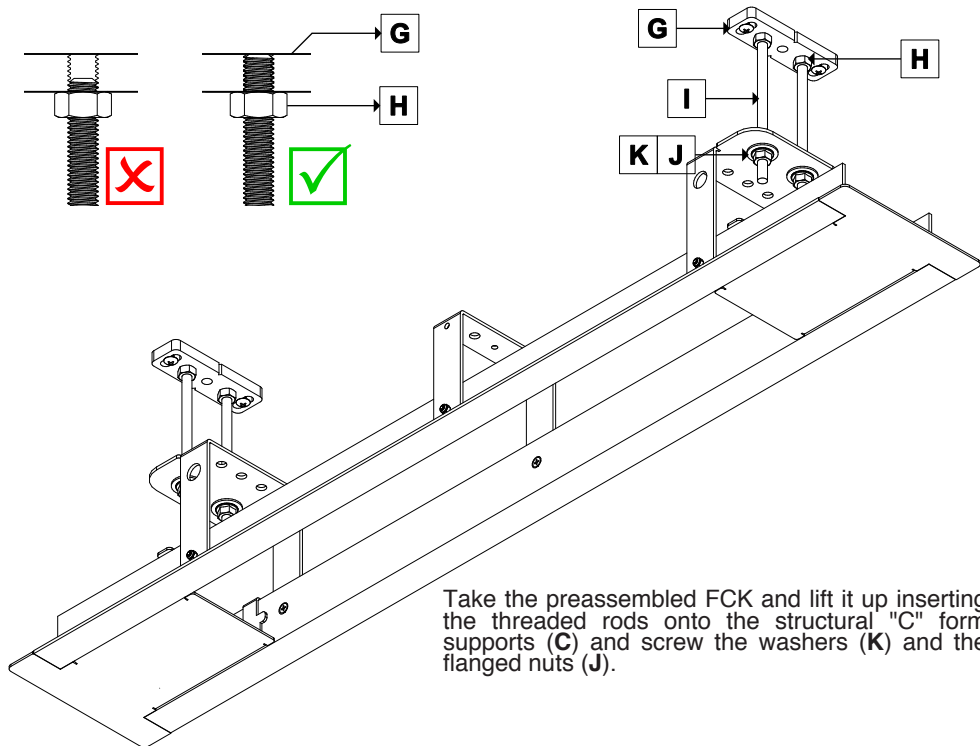
(see p.8 regarding minimum and maximum length of the rods)

Plug not supplied

Screw not supplied



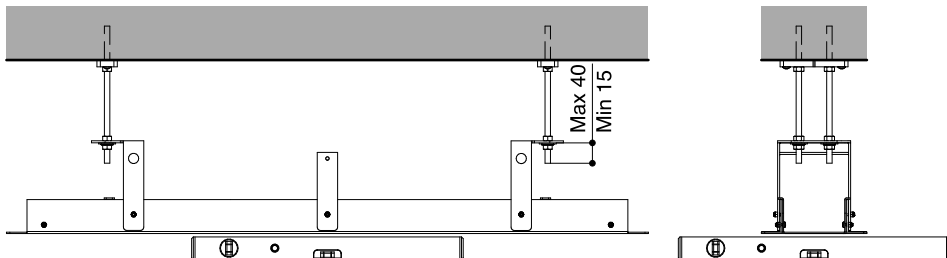
In order to fix the threaded rods (I) to the ceiling mounting plates (G), screw a bolt (H) for at least 20 mm. To the top part of the threaded rod.
Screw the threaded rods in the ceiling mounting plates, making sure that the thread is inserted through all the depth of the plate (10mm). Then, clamp the bolt tightly.



Take the preassembled FCK and lift it up inserting the threaded rods onto the structural "C" form supports (C) and screw the washers (K) and the flanged nuts (J).



Verify that the bottom part of the FCK is perfectly leveled. A non leveled installation of the FCK will cause bad functioning of the projection screen.



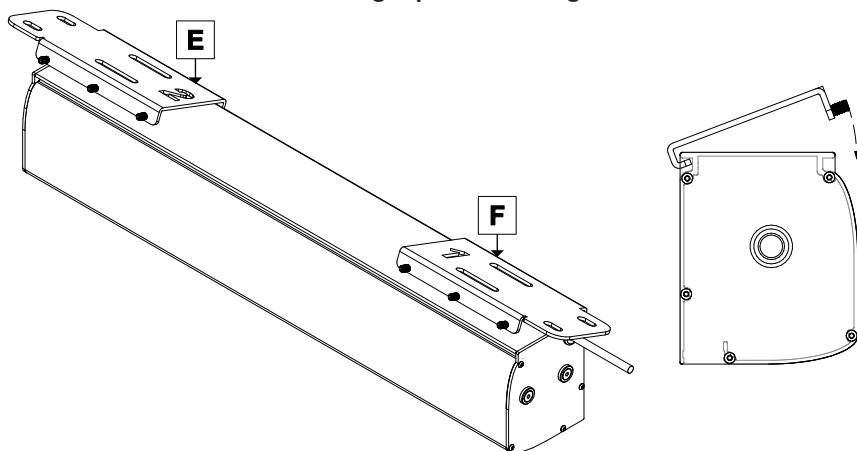
MOUNTING THE SCREEN ONTO THE FCK



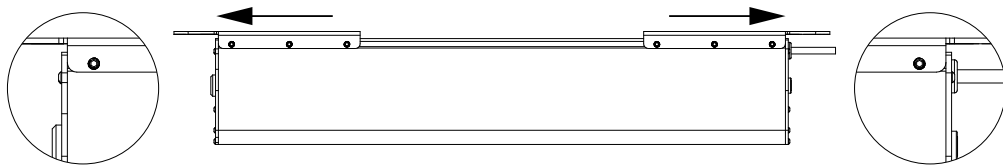
PLEASE TAKE CARE THAT MOUNTING STEPS ARE THE SAME BOTH FOR COMPACT AND MAJOR SCREENS.

Before you proceed with mounting the screen, fix the mounting plates (E) and (F), as indicated in the drawing below.

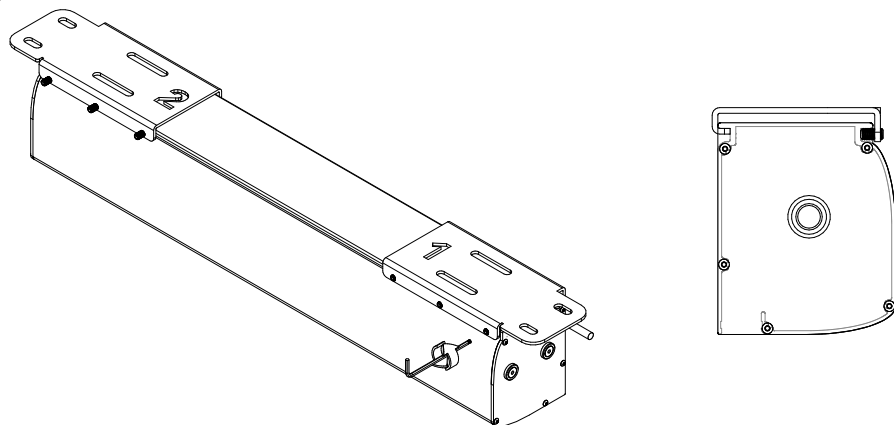
It is IMPORTANT to mount the right plate to the right side.



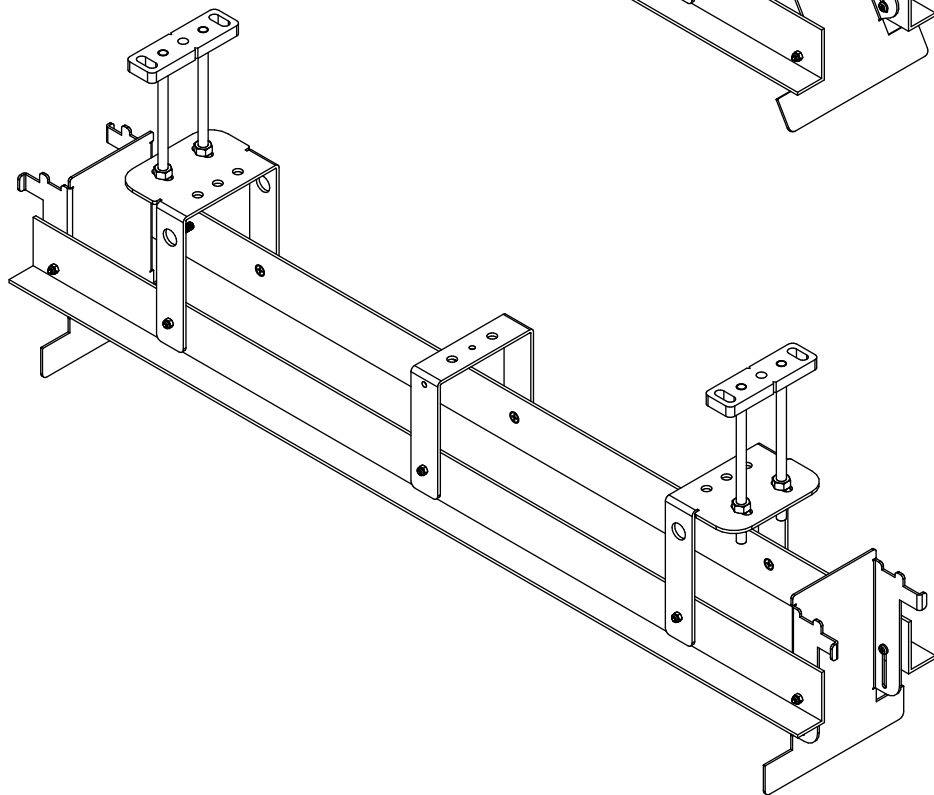
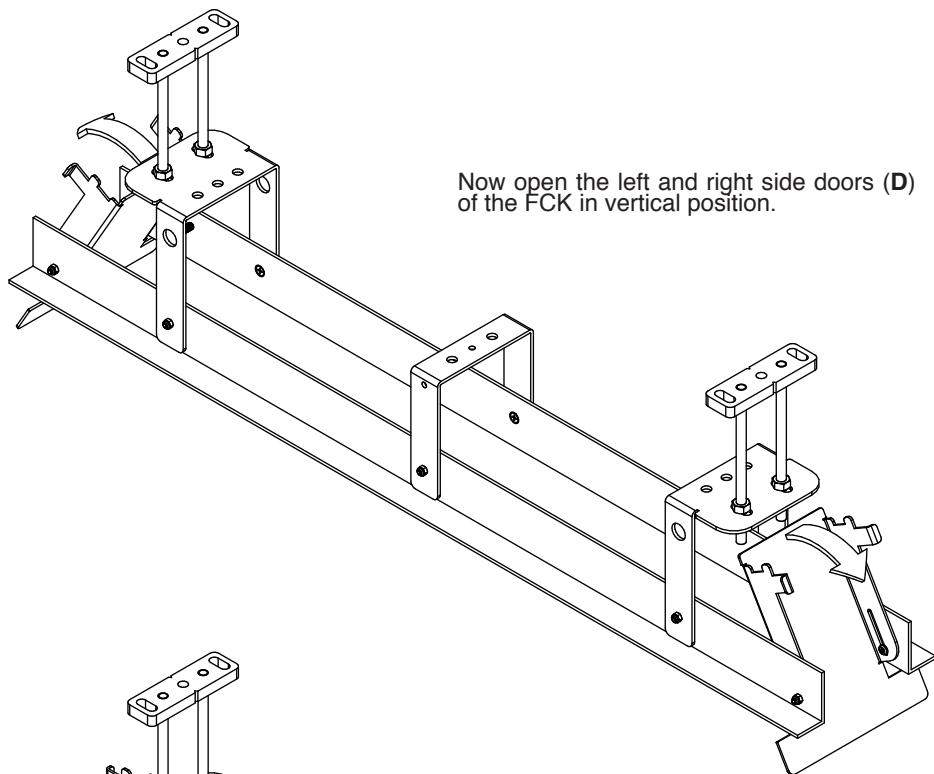
Before fixing the screws, check that the mounting plates (E) and (F) are positioned towards the end of the screen housing.

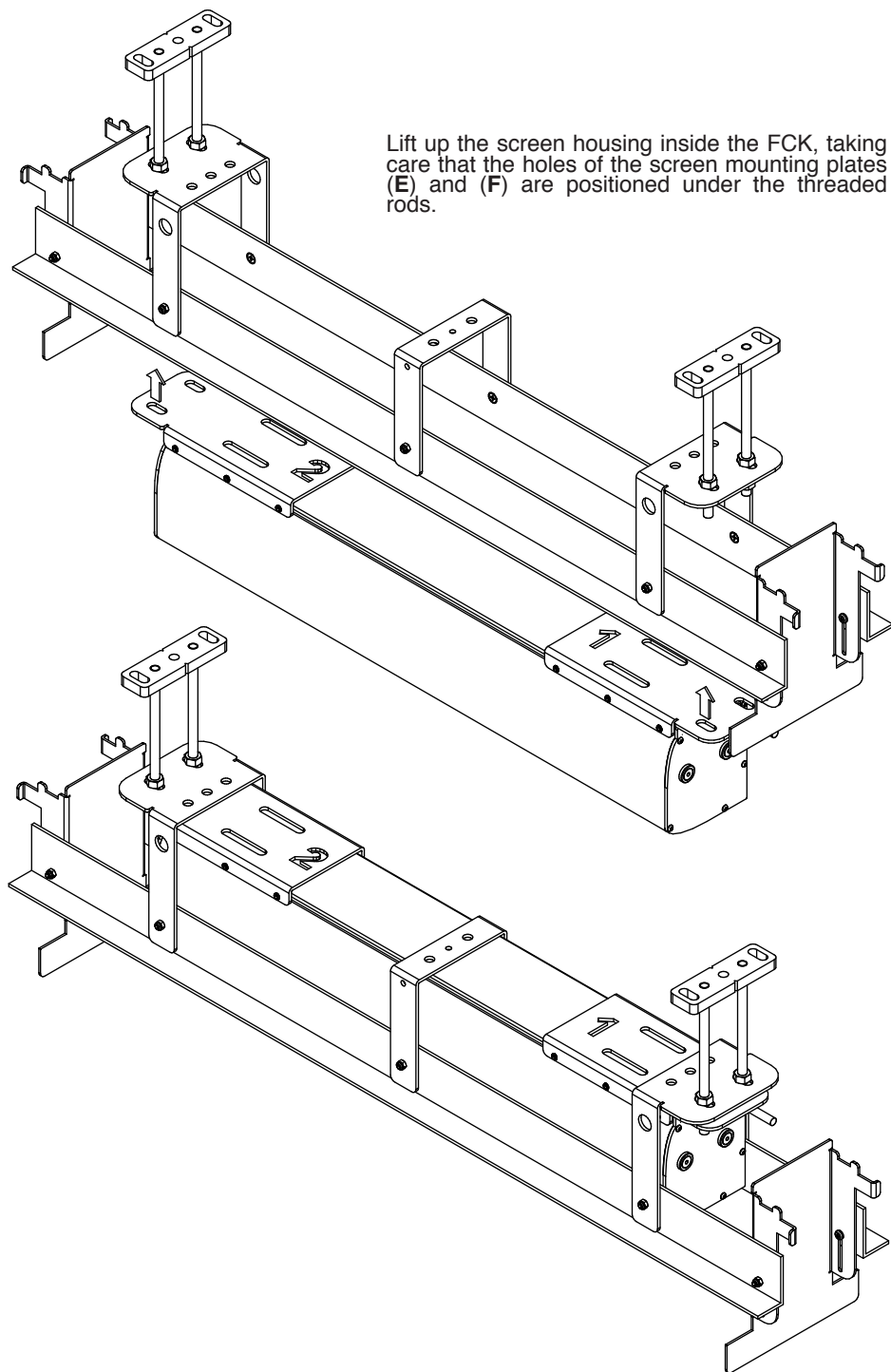


Now fix all the screws tightly and check that both mounting plates are firmly fixed to the screen housing.



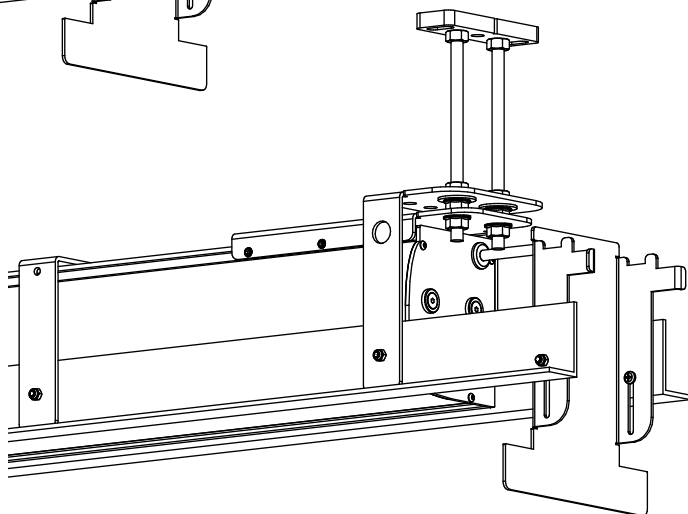
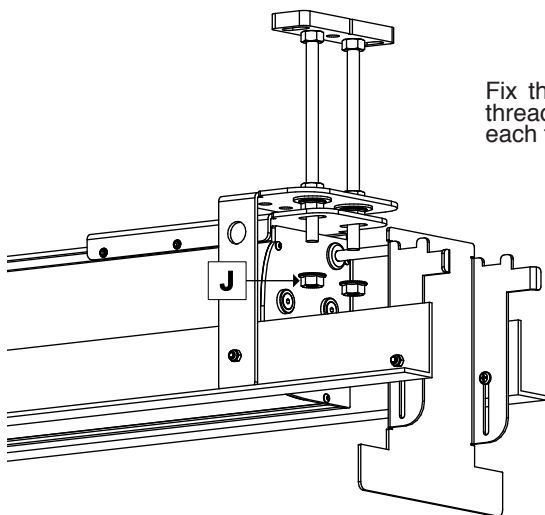
Now open the left and right side doors (D) of the FCK in vertical position.



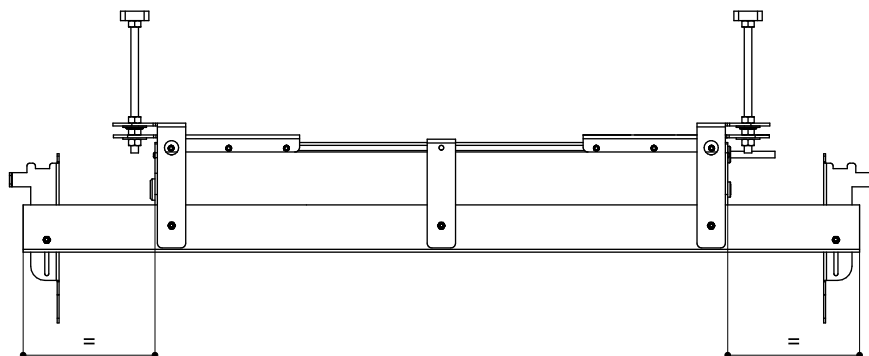


Lift up the screen housing inside the FCK, taking care that the holes of the screen mounting plates (E) and (F) are positioned under the threaded rods.

Fix the screen mounting plates to the threaded rods by using the nuts (J) for each threaded rod at each side.



Before tightening the nuts, please check that the housing is perfectly centered with the FCK. Now, tighten firmly the flanged nuts.



Now you can make the electrical connection of the screen motor and close the side doors.

