



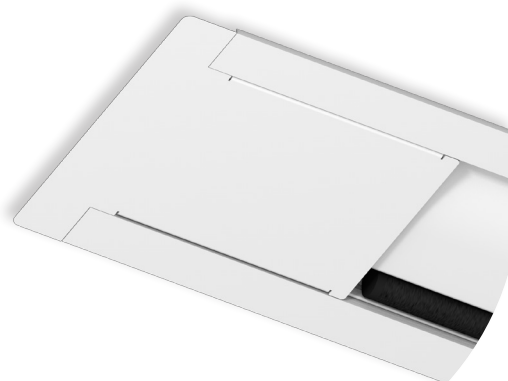
The **MAJOR TENSIONED** is a motorized projection screen suitable for medium to large size rooms, both in Home Cinema applications and in A/V Professional where attention to details is very important.

Its peculiar tensioning system on each side is distinguishing for a dual aspect: the specifically developed curved sides and the tensioning chords that follow the descent of both sides of the surface.

It is supplied, as a standard, with black side curved borders, a black top drop 30 cm. high (customizable), a black bottom border and a black dowel bar.

Thanks to the borders all around, the image will be perceived as sharper to the spectator's eye.

Available in 4:3, 16:9 and 16:10 ratios or **bespoke sizes**.



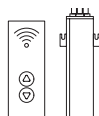
False ceiling trim kit
(optional - for details see p. 53)



n.4
Wall/Ceiling
brackets



n.1
On/off
switcher



Kit RF Remote
control with
external
receiver



Interface
switch 12 volt



Low voltage
contact
interface



Multiple
control
interface set



Interface
RS485



Nm 9
Rpm 26
Faster
motor

INCLUDED

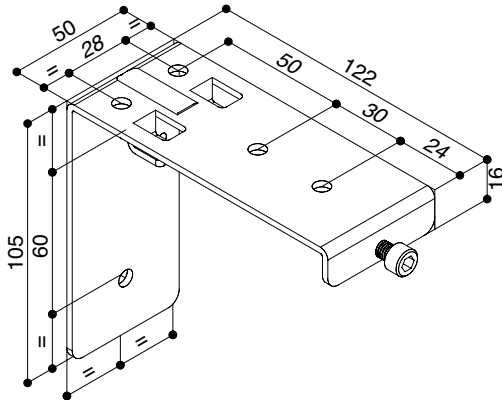
OPTIONAL pag 70-71



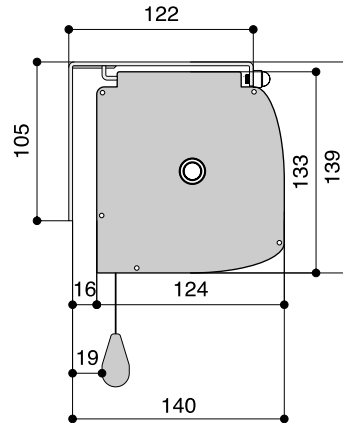
**DROP OF
PROJECTON
CLOTH**
STANDARD

**FRONT DROP OF
PROJECTON
CLOTH**
(optional)

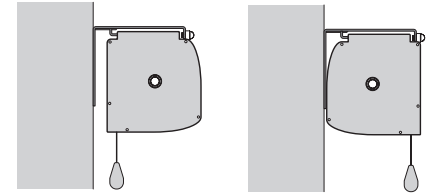
WALL-CEILING BRACKET



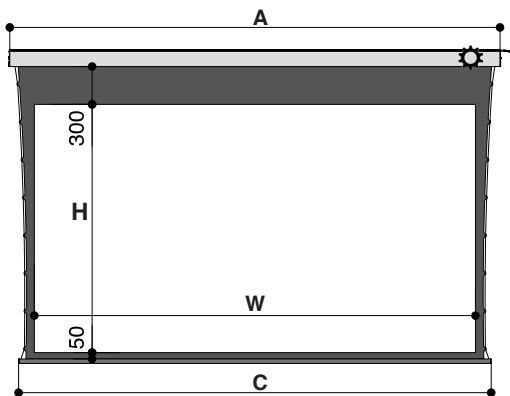
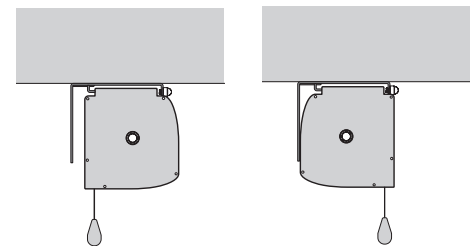
HOUSING DIMENSIONS



WALL MOUNTING



CEILING MOUNTING



TECHNICAL SPECIFICATIONS

- Silent motor system provides a smooth and quiet operation
 - Power: **10 Nm**
 - Speed: **17 rpm**
 - Power supply: **230V / 50 Hz**
 - Consumption: **156 W**
 - Certification: **IMQ**
- Totally manufactured from aluminium
- Housing dimensions: 124x133 mm. (DxH)
- Housing painted with white epoxy powders (RAL 9010)
- Four universal mounting brackets either for ceiling or for wall included
- On/off switcher included
- Power cable located at the **right** side of the screen housing seen from the front
- Flame-retardant projection surfaces
- Black side borders of 5 cm. (in the narrowest point), black bottom border of 5 cm., black top drop of 30 cm. and black dowel bar: height 35 mm. depth 20 mm.
- Hour-shape glass tensioning system to provide perfect flatness
- **Screen housing available in different colours (optional)**

DIMENSIONS measures in cm

4:3 Ratio Viewing area (WxH)	16:10 Ratio Viewing area (WxH)	16:9 Ratio Viewing area (WxH)	Overall dimensions A - C	Approx. net weight (Kg)
300 x 225	300 x 187	300 x 169	340 - 334	31
350 x 265	350 x 219	350 x 197	390 - 384	36
400 x 300	400 x 250	400 x 225	440 - 434	40

PROJECTION CLOTHS

Front projection surfaces	Gain	Rear projection surfaces <i>**no black borders**</i>	Gain
White	1.2	Rear Plus	1.1
Matte White	1.2	Front Rear	0.9
Lumi Grey	0.8		
Microperforated	1.1		
Lumi Grey Microperforated	0.8		
Pure KS	1.1		
Pure Matte KS	1.1		
Silver Blast*	1.3		
Bright Contrast 3D 0.8*	0.8		

*Limited in height

Warranty: 5 years on the motor - 24 months on the other components

ENGINEERED LIKE NO OTHER SCREEN IN THE WORLD
www.screenint.com

