

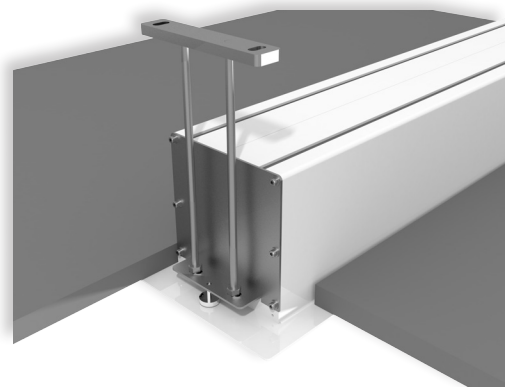


**GIOTTO TENSIONED** is the most innovative UPGRADABLE electric **in-ceiling** projection screen on the market. Its mechanical construction makes it an ideal and unique solution for in-ceiling installations both in residential and AV professional environments.

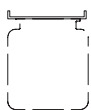
The Giotto is easy to mount and has the **possibility to install the roller tube with projection cloth after the installation is finished** and to substitute the projection surface when required.

Giotto Tensioned has black side borders cut in hour-shape glass that together with the tension system assure a perfect flatness to the projection surface. Moreover, a 5 cm. black bottom border and a black top drop of 30 cm. are included.

Available in 4:3, 16:9 and 16:10 formats or *bespoke sizes*.



LEFT SIDE VIEW



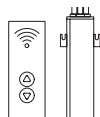
n.2  
Ceiling  
mounting  
brackets



n.1  
On/off  
switcher



Extremely  
quiet motor



Kit RF Remote  
control with  
external  
receiver



Interface  
switch 12 volt



Low voltage  
contact  
interface



Multiple  
control  
interface set



Interface  
RS485



Nm 9  
Rpm 26

Faster  
motor

INCLUDED

OPTIONAL pag 70-71



