



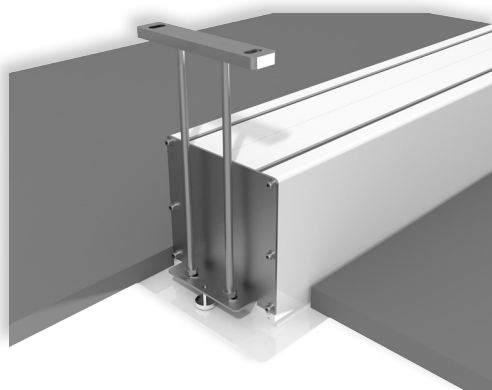
**GIOTTO HOME CINEMA** is the most innovative UPGRADABLE electric in-ceiling projection screen on the market. Its mechanical construction makes it an ideal and unique solution for in-ceiling installations both in residential and AV professional environments.

The Giotto is easy to mount and has the **possibility to install the roller tube with projection cloth after the installation is finished.**

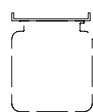
This peculiar feature allows also to easily substitute the projection surface if required by the customer for maintenance reasons or necessity to upgrade the projection cloth.

This model has black side borders 5 cm. of width, 5 cm. black bottom border and a black top drop of 30 cm. included.

Available in 4:3, 16:9 and 16:10 formats or *bespoke sizes*.



LEFT SIDE VIEW



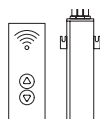
n.2  
Ceiling  
mounting  
brackets



n.1  
On/off  
switcher



Extremely  
quiet motor



Kit RF Remote  
control with  
external  
receiver



Interface  
switch 12 volt



Low voltage  
contact  
interface



Multiple  
control  
interface set



Interface  
RS485



Nm 9  
Rpm 26

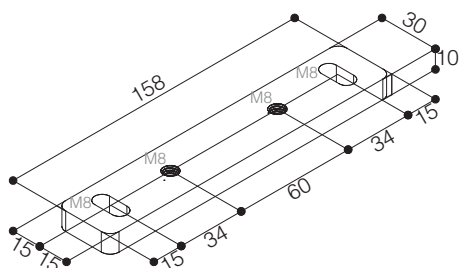
Faster  
motor

INCLUDED

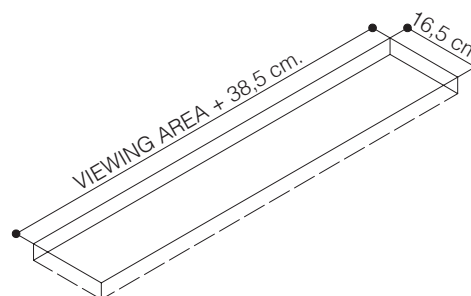
OPTIONAL pag 70-71



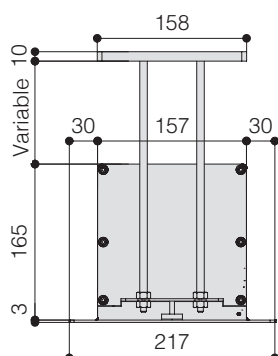
## CEILING BRACKET



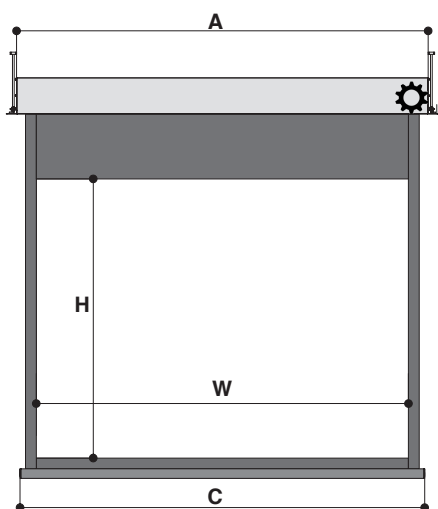
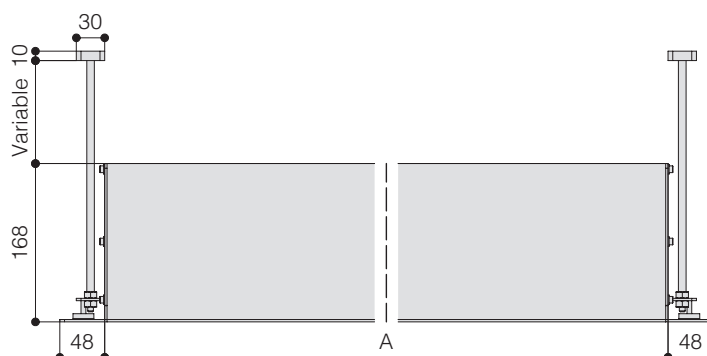
### DIMENSIONS OF THE HOLE TO BE MADE IN THE FALSE CEILING



### HOUSING SIDE VIEW



### HOUSING FRONT VIEW



## TECHNICAL SPECIFICATIONS

- Silent motor system provides a smooth and quiet operation
  - Power: **7 Nm**
  - Speed: **18 rpm**
  - Power supply: **230V / 50 Hz**
  - Consumption: **120 W**
  - Certification: **IMQ**
- In-ceiling housing manufactured from aluminium
- Lower part of the housing, trap door and bezel sprayed with white epoxy powders (RAL 9010)
- Black dowel bar: height 44 mm. - depth 17 mm.
- Two ceiling mounting brackets with four threaded rods 100 cm. long included
- On/Off switcher included
- **Extremely quiet motor** included
- Flame retardant projection surfaces
- Side black borders of 5 cm. width, black bottom border of 5 cm. and black top drop of 30 cm.
- Minimum height required in the false ceiling: 17 cm
- **Screen housing available in different colours** (optional)

**DIMENSIONS** measures in cm

<b>4:3 Ratio</b> Viewing area (WxH)	<b>16:10 Ratio</b> Viewing area (WxH)	<b>16:9 Ratio</b> Viewing area (WxH)	<b>Overall dimensions</b> A - C	<b>Approx. net weight</b> (Kg)
160 x 120	160 x 100	160 x 90	190,5 - 174	24
180 x 135	180 x 112	180 x 101	210,5 - 194	27
200 x 150	200 x 125	200 x 112	230,5 - 214	30
220 x 165	220 x 137	220 x 124	250,5 - 234	33
250 x 190	250 x 156	250 x 140	280,5 - 263	37
300 x 225	300 x 187	300 x 169	330,5 - 314	45
350 x 265	350 x 219	350 x 197	380,5 - 364	52
400 x 300	400 x 250	400 x 225	430,5 - 414	60
-	450 x 281	450 x 253	480,5 - 464	67

## PROJECTION CLOTHS

Front projection surfaces	Gain		
White	1.2		
Matte White	1.2		
Lumi Grey	0.8		
Microperforated	1.1		
Lumi Grey Microperforated	0.8		
Cinesound*	0.7		
Pure KS	1.1		
Pure Matte KS	1.1		
Bright Contrast 3D 0.8*	0.8		
Fibre Matte*	1.25		

\*Limited in height

**Warranty:** 5 years on the motor - 24 months on the other components



**ENGINEERED LIKE NO OTHER SCREEN IN THE WORLD**  
**www.screenint.com**