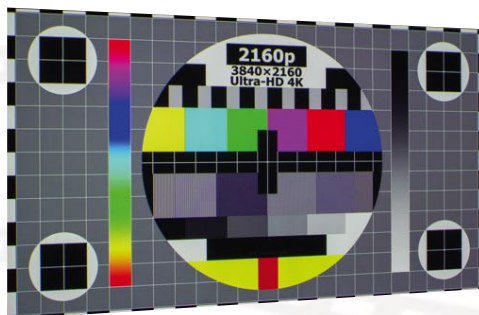
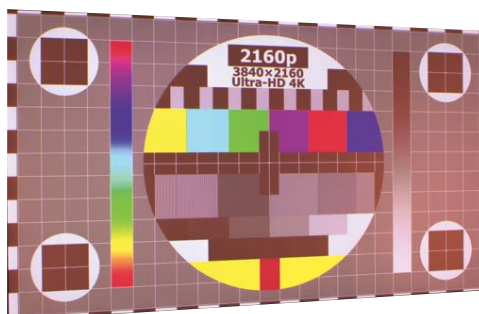
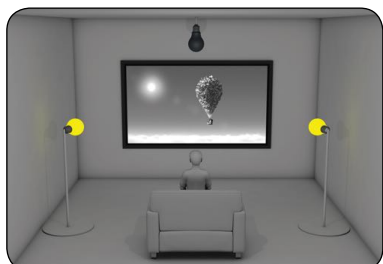


## PROJECTION TESTS\*

Room completely dark

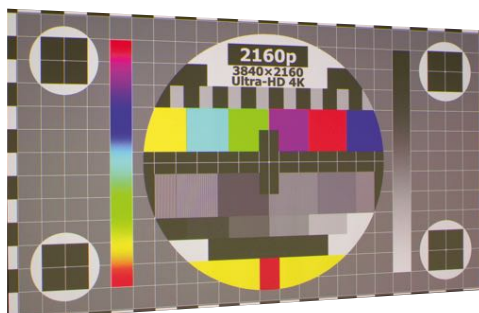


Direct artificial light on screen



Lamp "Ryet Led"  
400 lm - 5w - 2700 Kelvin - (n.3 left, n.3 right)

Artificial light from ceiling



Compact fluorescent lamps 55w  
Color temperature - 4000 Kelvin - n.2 pcs

\* Tested with projector  
EPSON EH-LS10000 (1.500 AI)

## FIBRE MATTE

### FRONT PROJECTION (NON PERFORATED)



Fibreglass based, matt surface.

Suitable for screens up to 225 cm. of height.

Can be used for nearly all projection conditions.

Suitable to be mounted **behind windows** or **near heating sources**.

Completely blackout.

Suitable for

- Motorized screen
- Fixed frame screen



Colour	★ ★ ★ ★ ★
Contrast	★ ★ ★ ★ ★
Ambient light rejection	★ ★ ★ ★ ★
4K projection	★ ★ ★ ★ ★

### Technical specifications

GAIN	1.25
VIEWING ANGLE HALF GAIN	150°
ROLLER HEIGHT (cm)	300
THICKNESS (mm)	0,36
WEIGHT (gr/sqm)	530
FIRE PROOF CERTIFICATION	B1